

CHAPTER 9

CLAD ULTIMATE DOUBLE HUNG MAGNUM

Product Information

Unit Features	9.2
NFRC Values / Design Pressure / Minimum and Maximum Values	9.3
Egress Information	9.4
Measurement Conversion Values	9.5

Elevations and Sections

Section Details: Double Hung / Single Hung	9.8
Section Details: Transom and Picture	9.9
Section Details: Casing Options	9.10
Section Details: Mullion	9.11
Section Details: Divided Lite Options	9.12
Daylight Opening Conversions	9.13
Section Details: Construction	9.14

NOTE:

Specifications and technical data are subject to change without notice.

Allow 1/16" (2) tolerance on all measurements.

Metric measurements are shown in parenthesis.

For accessories dimensions and applications see the Accessories section of this manual.

For technical assistance about Marvin products you may call our Architectural Hotline 1-800-346-3363 or visit our website: www.marvin.com.

CLAD ULTIMATE DOUBLE HUNG MAGNUM

UNIT FEATURES

Frame:

- Interior: Pine wood interior standard. Optional white oak, cherry, mahogany, vertical grain Douglas fir
- Exterior: Extruded aluminum, .050" (1.3) thick
- Frame thickness: 1 3/4" (44)
- Frame width: 4 9/16" (116)

Sash:

- Interior: Pine wood interior standard. Optional white oak, cherry, mahogany, vertical grain Douglas fir
- Exterior: Extruded aluminum, .045" (1.1) thick
- Sash thickness: 1 9/16" (40)
- Operating Sash are removable for cleaning, service or finishing

Interior and exterior finish:

- Interior finish: Treated bare wood or white primed (pine only)
- Exterior finish: Two coat finish system using Kynar® or Hylar® resins. Meets or exceeds AAMA 2605 requirements.
- Standard Color: Stone White, Bahama Brown, Bronze, Pebble Gray, Evergreen. Select Color: Sierra White, Coconut Cream, French Vanilla, Cashmere, Desert Beige, Cumulus Gray, Cadet Gray, Ebony, Arctic White, Cascade Blue, Cobalt Blue, Hampton Sage, Sherwood Green and Wineberry. Contact your Marvin representative for details on custom colors.

Hardware:

- Sash lock and keeper: Surface mounted, open style crescent cam lock. Two locks on glass sizes of 36" (914) and wider. Color: Satin Taupe, Optional: White, Bronze, Brass, Antique Brass, Oil Rubbed Bronze, Satin Chrome, Satin Nickel
- Sash lift is optional: Color: Satin Taupe, Optional: White, Bronze, Brass, Antique Brass, Oil Rubbed Bronze, Satin Chrome, Satin Nickel
- Balance system: Spiral balance system

Weather Stripping:

- Operating units: Continuous leaf weather strip at head jamb, bulb weather strip at the check rail and bottom rail and foam filled bulb weather strip at the jambs Color: Beige (white)

Jamb Extensions:

- Jamb extensions available for various wall thickness factory applied, finished matching interior

Insect Screens:

- Aluminum Screen: Full screen standard, half screen optional. Standard Color: Stone White, Bahama Brown, Bronze, Pebble Gray, Evergreen. Select Color: Sierra White, Coconut Cream, French Vanilla, Cashmere, Desert Beige, Cumulus Gray, Cadet Gray, Ebony, Arctic White, Cascade Blue, Cobalt Blue, Hampton Sage, Sherwood Green and Wineberry. Contact your Marvin representative for details on custom colors..
- Screen mesh: 18 by 16 charcoal fiberglass, optional screen mesh: charcoal aluminum wire, black aluminum wire, bright aluminum wire, bright bronze wire

Combination Storm Sash and Screen:

- Frame: Extruded aluminum frame, .045" (1.1) thick. Color: Stone White, Bahama Brown, Bronze, Pebble Gray and Evergreen
- Storm panel: Select quality glass in an extruded aluminum frame. Color: Stone White, Bahama Brown, Bronze, Pebble Gray and Evergreen
- Insect Screen: Screen mesh 18 by 16 charcoal fiberglass, optional screen mesh: charcoal aluminum wire, black aluminum wire, bright aluminum wire, bright bronze wire. Color: Stone White, Bahama Brown, Bronze, Pebble Gray and Evergreen
- Weather Strip: Pile weather strip between operating panels and at the stiles of main frame
- Hardware: Spring loaded latches to secure storm panel

Removable interior grilles:

- Bar: Pine wood 3/4" (19) or 1 1/8" (29)
- Pattern: Rectangular, custom lite layouts available. Contact your Marvin representative.

Interior / Exterior Simulated Divided lites (SDL):

- Interior bar: 7/8" (22) or 1 1/8" (29) wide. Pine wood standard. Optional: white oak, cherry, mahogany, vertical grain Douglas fir. Finish to match interior panel surface
- Exterior bar: 7/8" (22) or 1 1/8" (29) wide. Extruded aluminum. Finish to match exterior panel surface
- Insulating glass units available with or without aluminum spacer in airspace
- Pattern: rectangular. Custom lite layouts available. Contact your Marvin representative

Grilles-between-the-glass (GBG):

- 11/16" (17) white contoured aluminum bar. Optional flat aluminum bar.
- Rectangular lite layout

Glass and Glazing:

- Glazing method: Insulated
- Glazing seal: Silicone glazed
- Glazing type: Clear, Low E II with argon, laminated, solar tints, tempered, obscure, bronze tint, and reflective bronze
- Glazing will be altitude adjusted for higher elevations, argon gas not included

Accessories:

- Masonry brackets: 6" (152), 10" (254)
- Aluminum extrusions: Brick Mould Casing, Flat Casing, Mullion Covers, Frame Expanders, Mullion Expanders
- Marvin SillGuard™

Note:

Values shown in parenthesis represent metric equivalents

For product specifications please refer to the CSI Product Specifications, contact your Marvin representative

CLAD ULTIMATE DOUBLE HUNG MAGNUM

NFRC VALUES / DESIGN PRESSURE / MINIMUM AND MAXIMUM MEASUREMENTS

NFRC Unit Values					
Glazing Type	U-Factor	R-Value	Solar Heat Gain Coefficient	Visible Light Transmittance	Energy Star
Double Hung / Single Hung					
Size Tested	47 x 59	47 x 59	47 x 59	47 x 59	
Insulating glass	0.47	2.13	0.56	0.58	-
Insulating glass - SDL	0.47	2.13	0.50	0.52	-
Insulating glass - SDL with spacer bars	0.47	2.13	0.50	0.52	-
Insulating Low E II glass	0.35	2.86	0.30	0.51	N, NC, SC, S
Insulating Low E II glass - SDL	0.35	2.86	0.27	0.45	N, NC, SC, S
Insulating Low E II glass - SDL with spacer bars	0.36	2.78	0.27	0.45	N, NC, SC, S
Insulating Low E II glass - Argon	0.31	3.23	0.30	0.51	N, NC, SC, S
Insulating Low E II glass - Argon, SDL	0.31	3.23	0.27	0.45	N, NC, SC, S
Insulating Low E II glass - Argon, SDL with spacer bars	0.32	3.13	0.27	0.45	N, NC, SC, S
Transom 3/4" IG					
Size Tested	47 x 59	47 x 59	47 x 59	47 x 59	
Insulating glass	0.47	2.13	0.60	0.63	-
Insulating glass - SDL	0.47	2.13	0.54	0.56	-
Insulating glass - SDL with spacer bars	0.47	2.13	0.54	0.56	-
Insulating Low E II glass	0.33	3.03	0.32	0.55	N, NC, SC, S
Insulating Low E II glass - SDL	0.33	3.03	0.29	0.49	N, NC, SC, S
Insulating Low E II glass - SDL with spacer bars	0.34	2.94	0.29	0.49	N, NC, SC, S
Insulating Low E II glass - Argon	0.29	3.45	0.32	0.55	N, NC, SC, S
Insulating Low E II glass - Argon, SDL	0.29	3.45	0.29	0.49	N, NC, SC, S
Insulating Low E II glass - Argon, SDL with spacer bars	0.30	3.33	0.29	0.49	N, NC, SC, S
Picture 1" IG					
Size Tested	47 x 59	47 x 59	47 x 59	47 x 59	
Insulating glass	0.45	2.22	0.56	0.60	-
Insulating glass - SDL	0.45	2.22	0.50	0.54	-
Insulating glass - SDL with spacer bars	0.45	2.22	0.50	0.54	-
Insulating Low E II glass	0.32	3.13	0.31	0.53	N, NC, SC, S
Insulating Low E II glass - SDL	0.32	3.13	0.27	0.47	N, NC, SC, S
Insulating Low E II glass - SDL with spacer bars	0.33	3.03	0.27	0.47	N, NC, SC, S
Insulating Low E II glass - Argon	0.29	3.45	0.30	0.53	N, NC, SC, S
Insulating Low E II glass - Argon, SDL	0.29	3.45	0.27	0.47	N, NC, SC, S
Insulating Low E II glass - Argon, SDL with spacer bars	0.30	3.33	0.27	0.47	N, NC, SC, S

NOTE:

Product Values are determined using the National Fenestration Rating Council (NFRC) Procedures for determining fenestration product values.

U-Value: (Btu/hr-sq ft-°F) Lower the U-Value, the greater the resistance to heat flow and better its insulating value.

R-Value: (1/U-Value) Higher the R-Value, the greater the resistance to heat flow and better its insulating value.

Visible Light Transmittance (VLT): Percentage of visible light transmitted through the unit.

Solar Heat Gain Coefficient (SHGC): The lower a window's SHGC, the less solar heat it transmits, and the greater its shading ability.

Capillary tubes are required for IG units at high elevations. Argon will not be furnished in units with capillary tubes.

Contact the Architectural Department Hotline at (800-346-3363) for additional NFRC Unit Values.

Design Pressures		
Double Hung	Transom	Picture
DP H - C50 - up to RO 54 3/8" (1381) x 104 7/8" (2664)	DP - TR-LC50 - up to RO 74 3/8" (1889) x 22 3/16" (716)	DP F-C50 - up to RO 62 3/8" (1584) x 104 7/8" (2664)
DP H - C35 - up to RO 60 3/8" (1534) x 120 3/8" (3058)	—	—

Minimum and Maximum Measurements					
Glazing Type	Minimum RO Width	Minimum RO Height	Maximum RO Width	Maximum RO Height	Maximum Glass Square Feet
Double Hung					
Insulating Glass	*26 3/8" (670)	*48 7/8" (1241)	66 3/8" (1686)	128 7/8" (3273)	25
Transom					
Insulating Glass	14 3/8" (365)	14 3/16" (360)	106" (2692)	60" (1524)	25
Picture					
1" Insulating Glass	14 3/8" (365)	15 1/2" (394)	121" (3073)	128 7/8" (3273)	60

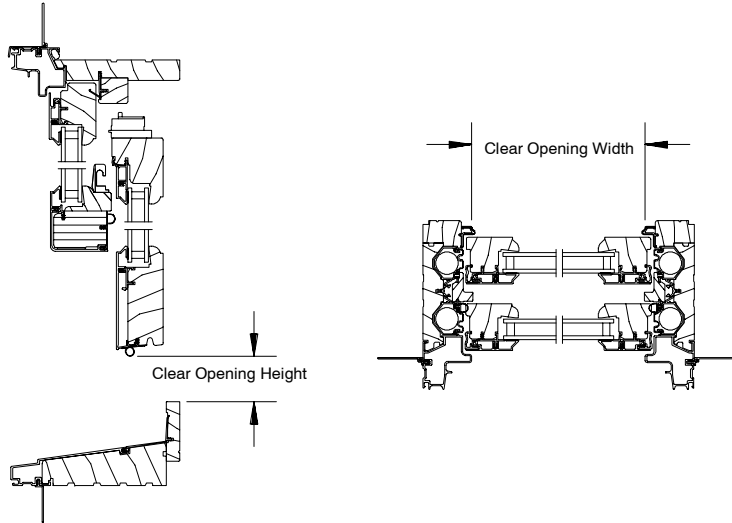
NOTE:

Standard glass thickness is determined by Marvin. For custom glass options, contact your Marvin representative.

* Minimum RO width of 16 3/8" is available with a minimum RO height of 64 7/8".

CLAD ULTIMATE DOUBLE HUNG MAGNUM

EGRESS INFORMATION



International Building Code - 2000

Section 1009 Emergency Escape and Rescue

1009.2 Minimum size: Emergency escape and rescue openings shall have a minimum net clear opening of 5.7 square feet (0.53 m²). Exception: The minimum net clear opening for emergency escape and rescue openings on the ground level at grade is 5.0 square feet (0.46 m²).

1009.2.1 Minimum dimensions: The minimum net clear opening height dimension shall be 24 inches (610 mm). The net clear opening width dimension shall be 20 inches (508 mm). The net clear opening dimensions shall be the result of normal operation of the opening.

1009.3 Maximum height from the floor: Emergency escape and rescue opening shall have the bottom of the clear opening not greater than 44 inches (1118 mm) measured from the floor.

1009.4 Operational constraints: Emergency escape and rescue openings shall be operational from the inside of the room without the use of keys or tools. Bars, grilles, grates, or similar devices are permitted to be placed over emergency escape and rescue openings provided the minimum net clear opening size complies with Section 1009.2 and such devices shall be releasable or removable from the inside without the use of a key, tool, or force greater than that which is required for normal operation of the escape and rescue opening.

Code restrictions may vary depending on your local building codes.

Egress Conversions

Glass Size Width + 1 7/8" (48) = Egress Width
Rough Opening Width - 4 1/2" (114) = Egress Width

Glass Size Height	Rough Opening Height	Egress Height
20" (508) to less than 28" (711)	48 7/8" (1241) to less than 64 7/8" (1648)	16 1/2" (419)
28" (711) to less than 38" (965)	64 7/8" (1648) to less than 84 7/8" (2156)	24 1/2" (622)
38" (965) to less than 49" (1245)	84 7/8" (2156) to less than 106 7/8" (2715)	34 1/2" (876)
49" (1245) to less than 60" (1524)	106 7/8" (2715) to less than 128 7/8" (3273)	45 1/2" (1156)

NOTE:

Standard limited travel show. Optional full travel available. Contact your Marvin representative.

CLAD ULTIMATE DOUBLE HUNG MAGNUM

MEASUREMENT CONVERSIONS

Measurement Conversions - Double Hung												
Size Referenced	Daylight Opening (DLO)	Glass Size (GS)	Frame Size	Rough Opening	Masonry Opening (Without Casing)	Masonry Opening (With Brick Mould Casing)	Masonry Opening (With Flat Casing)					
	Dimension Needed											
Daylight Opening (DLO)	Width	+ 1 1/16" (27)	Width	+ 6 7/16" (164)	Width	+ 7 7/16" (189)	Width	+ 6 15/16" (176)	Width	+ 9 9/16" (243)	Width	+ 12 15/16" (329)
	Height	+ 1 1/16" (27)	Height	DLO x 2 + 10 1/2" (205)	Height	DLO x 2 + 11" (225)	Height	DLO x 2 + 10 3/4" (273)	Height	DLO x 2 + 12 11/16" (322)	Height	DLO x 2 + 14 3/8" (365)
Glass Size (GS)	Width	- 1 1/16" (27)	Width	+ 5 3/8" (137)	Width	+ 6 3/8" (162)	Width	+ 5 7/8" (149)	Width	+ 8 1/2" (216)	Width	+ 11 7/8" (302)
	Height	- 1 1/16" (27)	Height	GS x 2 + 8 3/8" (179)	Height	GS x 2 + 8 7/8" (225)	Height	GS x 2 + 8 5/8" (219)	Height	GS x 2 + 10 9/16" (268)	Height	GS x 2 + 12 1/4" (311)
Frame Size	Width	- 6 7/16" (109)	Width	- 5 3/8" (136)	Width	+ 1" (25)	Width	+ 1/2" (13)	Width	+ 3 1/8" (79)	Width	+ 6 1/2" (165)
	Height	- 10 1/2" + 2 (179)	Height	- 8 3/8" + 2 (179)	Height	+ 1/2" (13)	Height	+ 1/4" (19)	Height	+ 2 3/16" (56)	Height	+ 3 7/8" (98)
Rough Opening	Width	- 7 7/16" (189)	Width	- 6 3/8" (162)	Width	- 1" (25)	Width	- 1/2" (13)	Width	+ 2 1/8" (54)	Width	+ 5 1/2" (140)
	Height	- 11" + 2 (217)	Height	- 8 7/8" + 2 (225)	Height	- 1/2" (13)	Height	- 1/4" (6)	Height	+ 1 11/16" (43)	Height	+ 3 3/8" (86)
Masonry Opening (Without Casing)	Width	- 6 15/16" (176)	Width	- 5 7/8" (149)	Width	- 1/2" (13)	Width	+ 1/2" (13)	Width	+ 2 5/8" (67)	Width	+ 6" (152)
	Height	- 10 3/4" + 2 (273)	Height	- 8 5/8" + 2 (219)	Height	- 1/4" (6)	Height	+ 1/4" (6)	Height	+ 1 15/16" (49)	Height	+ 3 5/8" (92)
Masonry Opening (With Brick Mould Casing)	Width	- 9 9/16" (243)	Width	- 8 1/2" (216)	Width	- 3 1/8" (79)	Width	- 2 1/8" (54)	Width	- 2 5/8" (67)	Width	+ 3 3/8" (86)
	Height	- 12 11/16" + 2 (322)	Height	- 10 9/16" + 2 (268)	Height	- 2 3/16" (56)	Height	- 1 11/16" (43)	Height	- 1 15/16" (49)	Height	+ 1 11/16" (43)
Masonry Opening (With Flat Casing)	Width	- 12 15/16" (329)	Width	- 11 7/8" (302)	Width	- 6 1/2" (165)	Width	- 5 1/2" (140)	Width	- 6" (152)	Width	- 3 3/8" (86)
	Height	- 14 3/8" + 2 (365)	Height	- 12 1/4" + 2 (311)	Height	- 3 7/8" (98)	Height	- 3 3/8" (86)	Height	- 3 5/8" (92)	Height	- 1 11/16" (43)

NOTE:
Conversions represent units without dividers. Contact Marvin's for additional conversions.

CLAD ULTIMATE DOUBLE HUNG MAGNUM

MEASUREMENT CONVERSIONS

Measurement Conversions - Transom													
Size Referenced	Daylight Opening	Glass Size		Frame Size		Rough Opening		Masonry Opening (Without Casing)		Masonry Opening (With Brick Mould Casing)		Masonry Opening (With Flat Casing)	
Daylight Opening	Dimension Needed												
			Width	+ 1 1/16" (27)	Width	+ 6 7/16" (164)	Width	+ 7 7/16" (189)	Width	+ 6 15/16" (176)	Width	+ 9 9/16" (243)	Width
		Height	+ 1 1/16" (27)	Height	+ 6 3/4" (171)	Height	+ 7 1/4" (184)	Height	+ 7" (178)	Height	+ 8 15/16" (227)	Height	+ 10 5/8" (270)
Glass Size	Width	- 1 1/16" (27)		Width	+ 5 3/8" (137)	Width	+ 6 3/8" (162)	Width	+ 5 7/8" (149)	Width	+ 8 1/2" (216)	Width	+ 11 7/8" (302)
	Height	- 1 1/16" (27)		Height	+ 5 11/16" (144)	Height	+ 6 3/16" (157)	Height	+ 5 15/16" (151)	Height	+ 7 7/8" (200)	Height	+ 9 9/16" (243)
Frame Size	Width	- 6 7/16" (164)	Width	- 5 3/8" (136)		Width	+ 1" (25)	Width	+ 1/2" (13)	Width	+ 3 1/8" (79)	Width	+ 6 1/2" (165)
	Height	- 6 3/4" (171)	Height	- 5 11/16" (144)		Height	+ 1/2" (13)	Height	+ 1/4" (6)	Height	+ 2 3/16" (56)	Height	+ 3 7/8" (98)
Rough Opening	Width	- 7 7/16" (189)	Width	- 6 3/8" (162)	Width	- 1" (25)		Width	- 1/2" (13)	Width	+ 2 1/8" (54)	Width	+ 5 1/2" (140)
	Height	- 7 1/4" (184)	Height	- 6 3/16" (157)	Height	- 1/2" (13)		Height	- 1/4" (6)	Height	+ 1 11/16" (43)	Height	+ 3 3/8" (86)
Masonry Opening (Without Casing)	Width	- 6 15/16" (176)	Width	- 5 7/8" (149)	Width	- 1/2" (13)	Width	+ 1/2" (13)		Width	+ 2 5/8" (67)	Width	+ 6" (152)
	Height	- 7" (178)	Height	- 5 5/16" (151)	Height	- 1/4" (6)	Height	+ 1/4" (6)		Height	+ 1 15/16" (49)	Height	+ 3 5/8" (92)
Masonry Opening (With Brick Mould Casing)	Width	- 9 9/16" (243)	Width	- 8 1/2" (216)	Width	- 3 1/8" (79)	Width	- 2 1/8" (54)	Width	- 2 5/8" (67)		Width	+ 3 3/8" (86)
	Height	- 8 15/16" (227)	Height	- 7 7/8" (200)	Height	- 2 3/16" (56)	Height	- 1 11/16" (43)	Height	- 1 15/16" (49)		Height	+ 1 11/16" (43)
Masonry Opening (With Flat Casing)	Width	- 12 15/16" (329)	Width	- 11 7/8" (302)	Width	- 6 1/2" (165)	Width	- 5 1/2" (140)	Width	- 6" (152)	Width	- 3 3/8" (86)	
	Height	- 10 5/8" (270)	Height	- 9 9/16" (243)	Height	- 3 7/8" (98)	Height	- 3 3/8" (86)	Height	- 3 5/8" (92)	Height	- 1 11/16" (43)	

NOTE:
Conversions represent units without dividers. Contact your Marvin representative for additional conversions.

CLAD ULTIMATE DOUBLE HUNG MAGNUM

MEASUREMENT CONVERSIONS

Measurement Conversions - Picture													
Size Referenced	Daylight Opening	Glass Size		Frame Size		Rough Opening		Masonry Opening (Without Casing)		Masonry Opening (With Brick Mould Casing)		Masonry Opening (With Flat Casing)	
Daylight Opening	Dimension Needed												
			Width	+ 1 3/16" (30)	Width	+ 6 7/16" (164)	Width	+ 7 7/16" (189)	Width	+ 6 15/16" (176)	Width	+ 9 9/16" (243)	Width
		Height	+ 1 3/16" (30)	Height	+ 8 1/8" (206)	Height	+ 8 5/8" (219)	Height	+ 8 3/8" (213)	Height	+ 10 5/16" (262)	Height	+ 12 1/16" (306)
Glass Size	Width	- 1 3/16" (30)		Width	+ 5 1/4" (133)	Width	+ 6 1/4" (159)	Width	+ 5 7/8" (149)	Width	+ 8 1/2" (216)	Width	+ 11 7/8" (302)
	Height	- 1 3/16" (30)		Height	+ 6 15/16" (176)	Height	+ 7 7/16" (189)	Height	+ 7 3/16" (183)	Height	+ 9 1/8" (232)	Height	+ 10 13/16" (275)
Frame Size	Width	- 6 7/16" (164)	Width	- 5 1/4" (133)		Width	+ 1" (25)	Width	+ 1/2" (13)	Width	+ 3 1/8" (79)	Width	+ 6 1/2" (165)
	Height	- 8 1/8" (206)	Height	- 6 15/16" (176)		Height	+ 1/2" (13)	Height	+ 1/4" (6)	Height	+ 2 3/16" (56)	Height	+ 3 7/8" (98)
Rough Opening	Width	- 7 7/16" (189)	Width	- 6 1/4" (159)	Width	- 1" (25)		Width	- 1/2" (13)	Width	+ 2 1/8" (54)	Width	+ 5 1/2" (140)
	Height	- 8 5/8" (219)	Height	- 7 7/16" (189)	Height	- 1/2" (13)		Height	- 1/4" (6)	Height	+ 1 11/16" (43)	Height	+ 3 3/8" (86)
Masonry Opening (Without Casing)	Width	- 6 7/16" (176)	Width	- 5 7/8" (149)	Width	- 1/2" (13)	Width	+ 1/2" (13)		Width	+ 2 5/8" (67)	Width	+ 6" (152)
	Height	- 8 3/8" (213)	Height	- 7 3/16" (183)	Height	- 1/4" (6)	Height	+ 1/4" (6)		Height	+ 1 15/16" (49)	Height	+ 3 5/8" (92)
Masonry Opening (With Brick Mould Casing)	Width	- 9 9/16" (243)	Width	- 8 1/2" (216)	Width	- 3 1/8" (79)	Width	- 2 1/8" (54)	Width	- 2 5/8" (67)		Width	+ 3 3/8" (86)
	Height	- 10 5/16" (262)	Height	- 9 1/8" (232)	Height	- 2 3/16" (56)	Height	- 1 11/16" (43)	Height	- 1 15/16" (49)		Height	+ 1 11/16" (43)
Masonry Opening (With Flat Casing)	Width	- 12 15/16" (329)	Width	- 11 7/8" (302)	Width	- 6 1/2" (165)	Width	- 5 1/2" (140)	Width	- 6" (152)	Width	- 3 3/8" (86)	
	Height	- 12 1/16" (306)	Height	- 10 13/16" (275)	Height	- 3 7/8" (98)	Height	- 3 3/8" (86)	Height	- 3 5/8" (92)	Height	- 1 11/16" (43)	

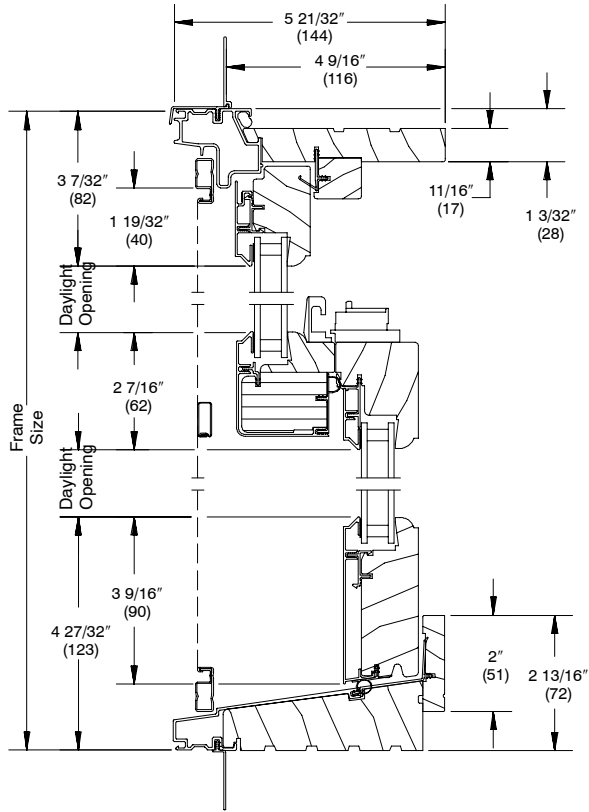
NOTE:
Conversions represent units without dividers. Contact Marvins for additional conversions.

CLAD ULTIMATE DOUBLE HUNG MAGNUM

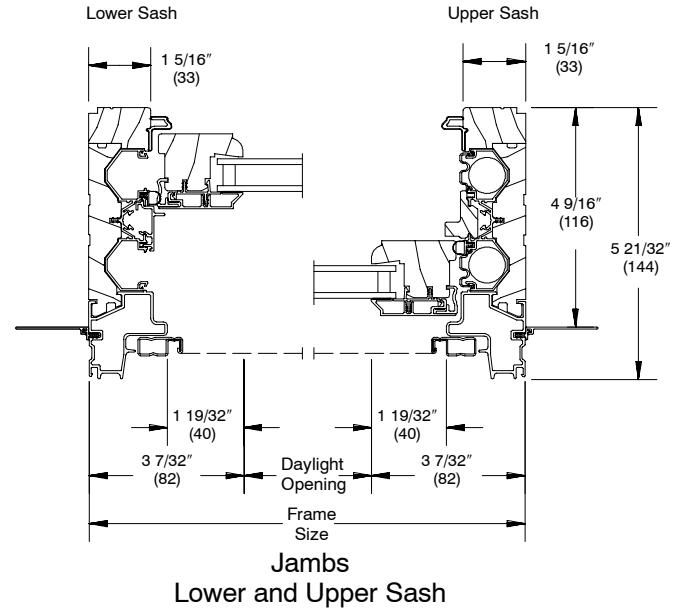
SECTION DETAILS

SCALE: 3" = 1' 0"

Double Hung

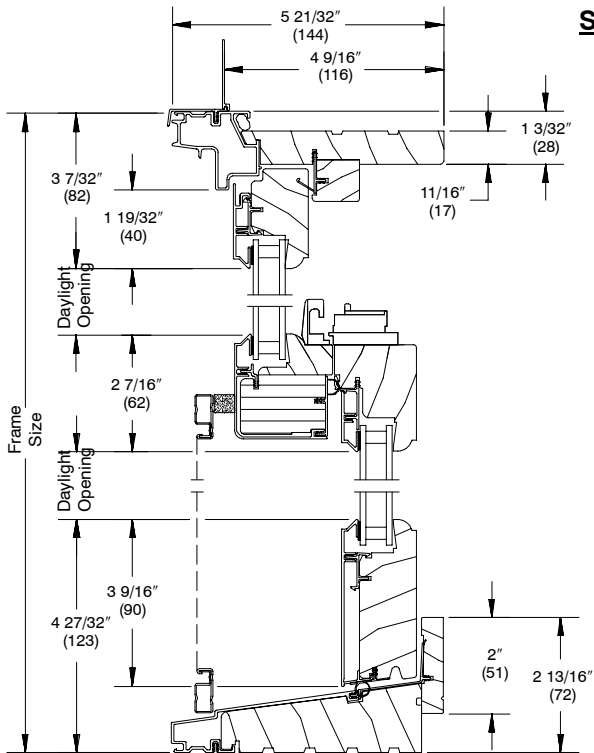


Head Jamb and Sill

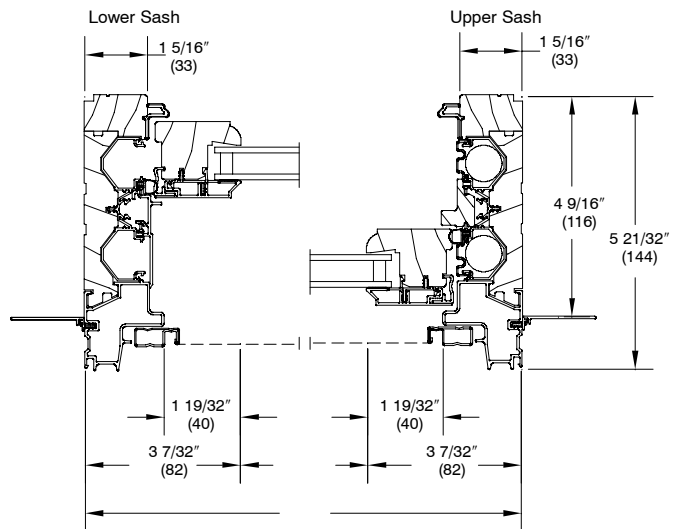


Jamba
Lower and Upper Sash

Single Hung



Head Jamb and Sill



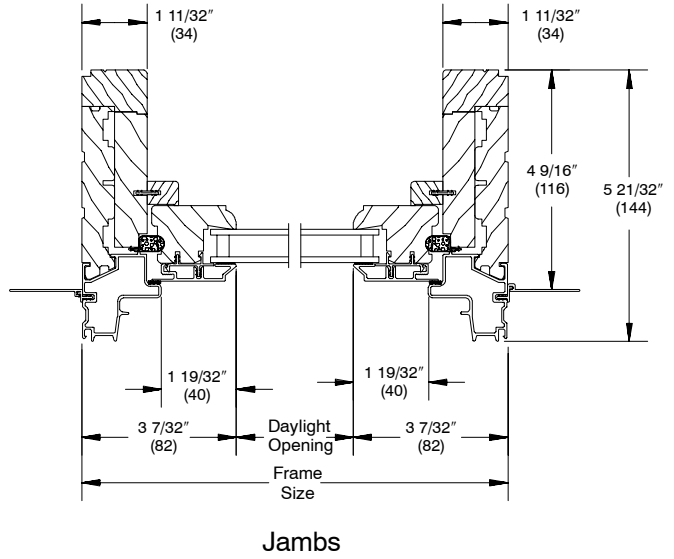
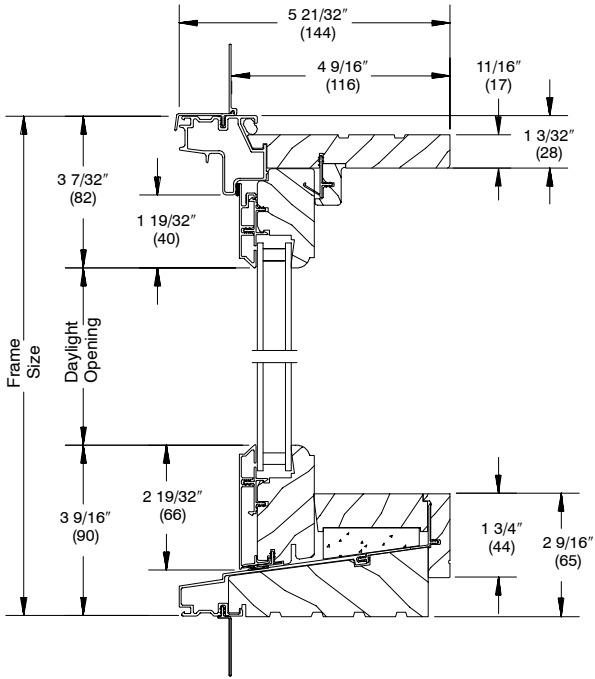
Jamba
Lower and Upper Sash

CLAD ULTIMATE DOUBLE HUNG MAGNUM

SECTION DETAILS

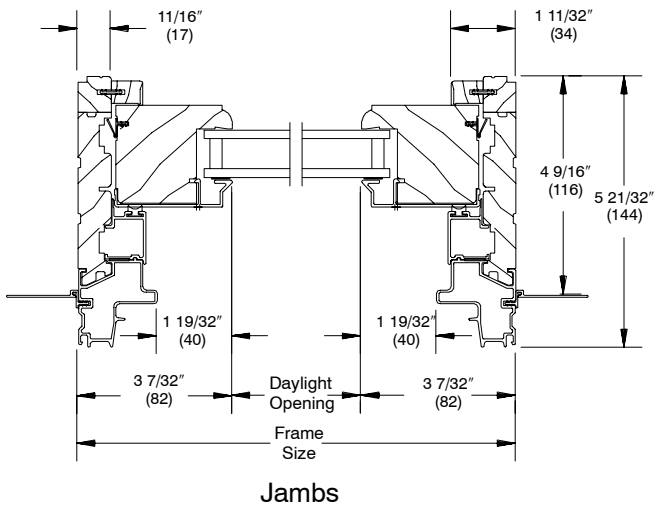
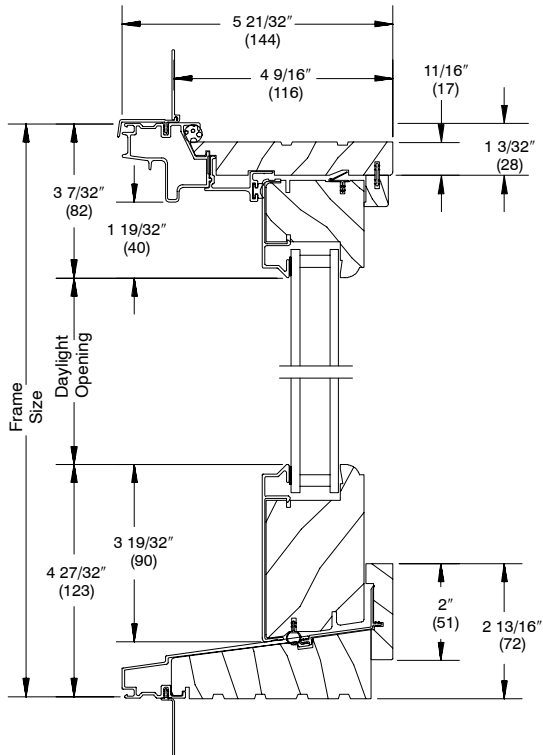
SCALE: 3" = 1' 0"

Transom



Head Jamb and Sill

Picture - 2" Sash

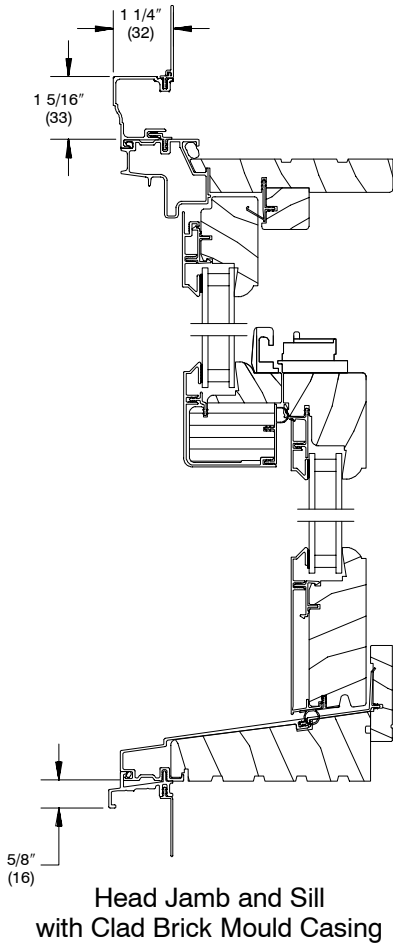


Head Jamb and Sill

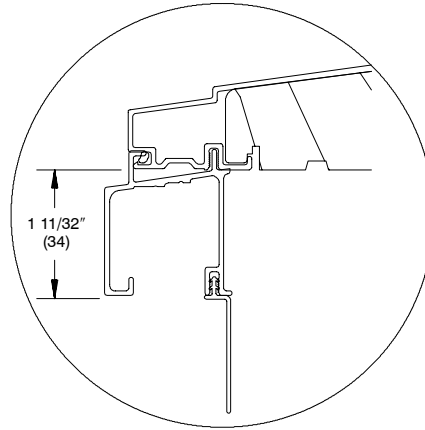
CLAD ULTIMATE DOUBLE HUNG MAGNUM

SECTION DETAILS

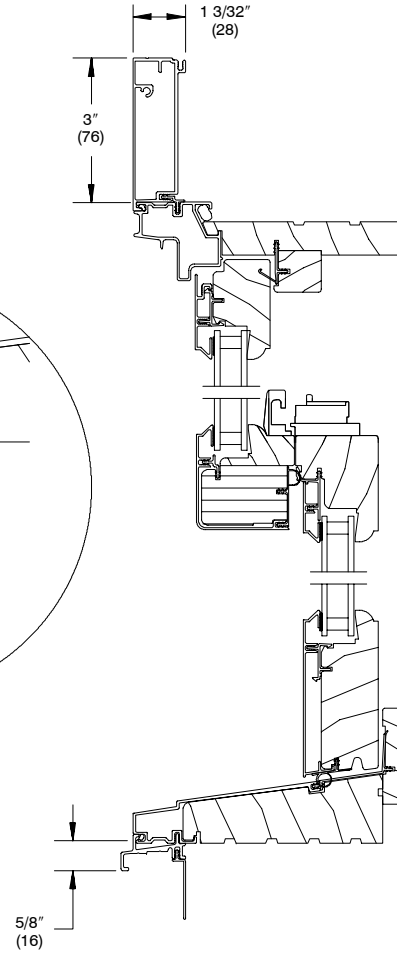
SCALE: 3" = 1' 0"



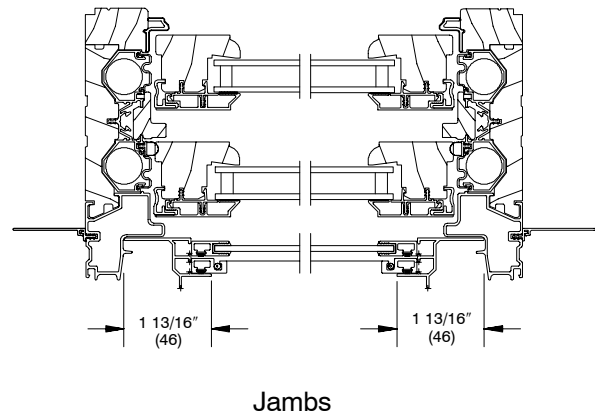
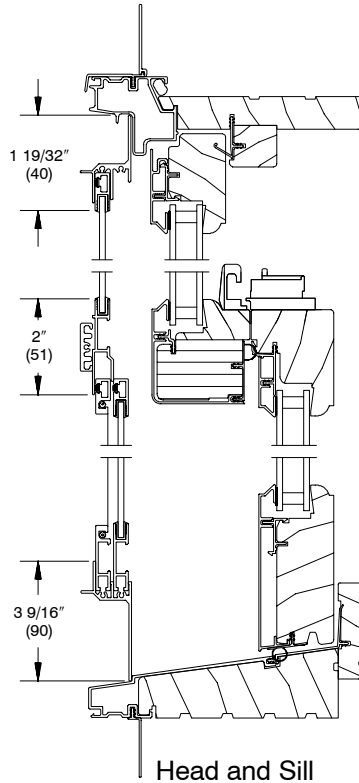
Casing Options



Sill with 2" extruded subsill



Combination

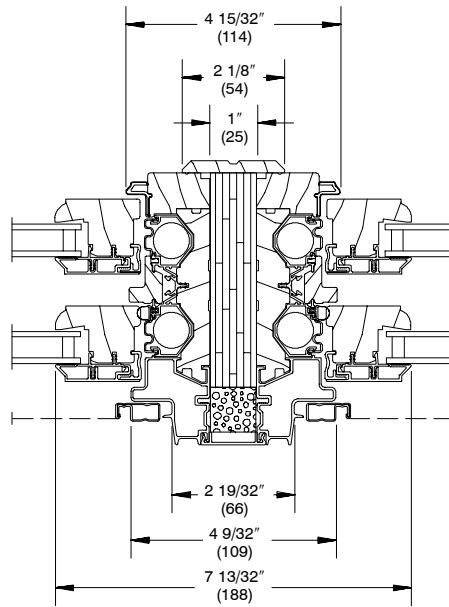


NOTE:
Clad combination size limited to operator RO 46 3/8" (1178) x 80 7/8" (2054)

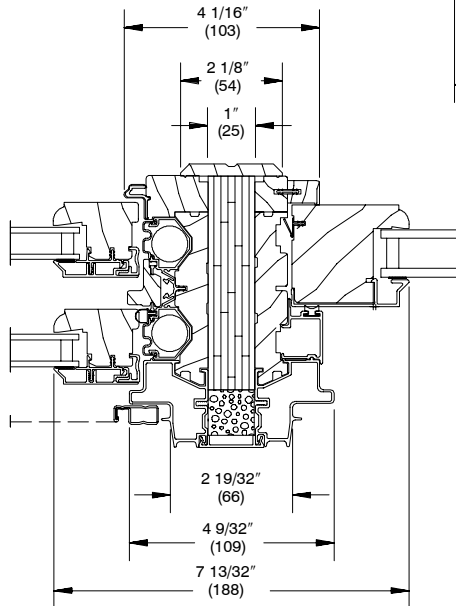
CLAD ULTIMATE DOUBLE HUNG MAGNUM

SECTION DETAILS

SCALE: 3" = 1' 0"

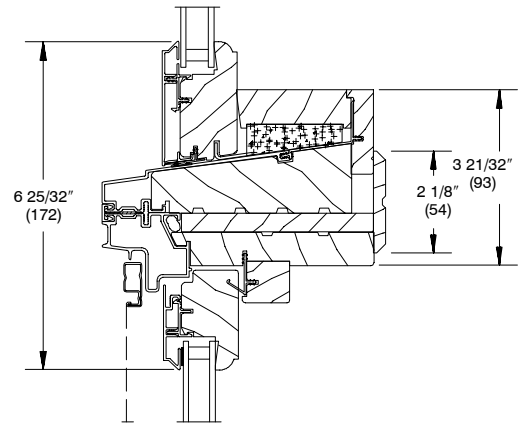


**1" Solid Space
Vertical Mullion
Operator / Operator**

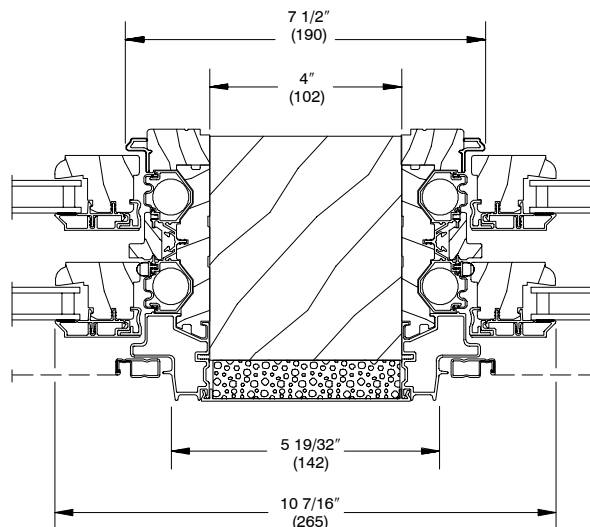


**1" Solid Space
Vertical Mullion
Operator / Picture**

NOTE:
 Interior trim
 supplied by Marvin
 applied by others



**Horizontal Mullion
Transom / Operator**



**Vertical Mullion
Operator with 4" Solid Space Mull**

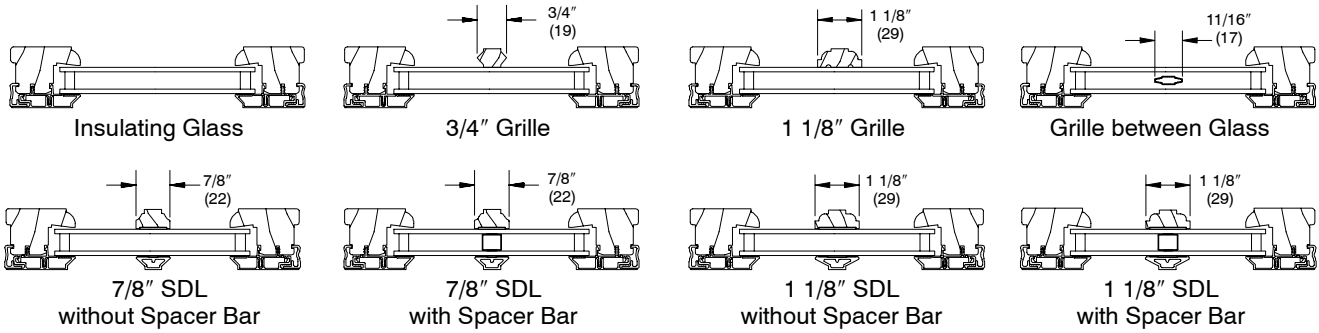
NOTE:
 Standard 1" LVL Vertical mull shown.
 For information on structural mullions
 refer to the Product Performance and
 Information Section.

CLAD ULTIMATE DOUBLE HUNG MAGNUM

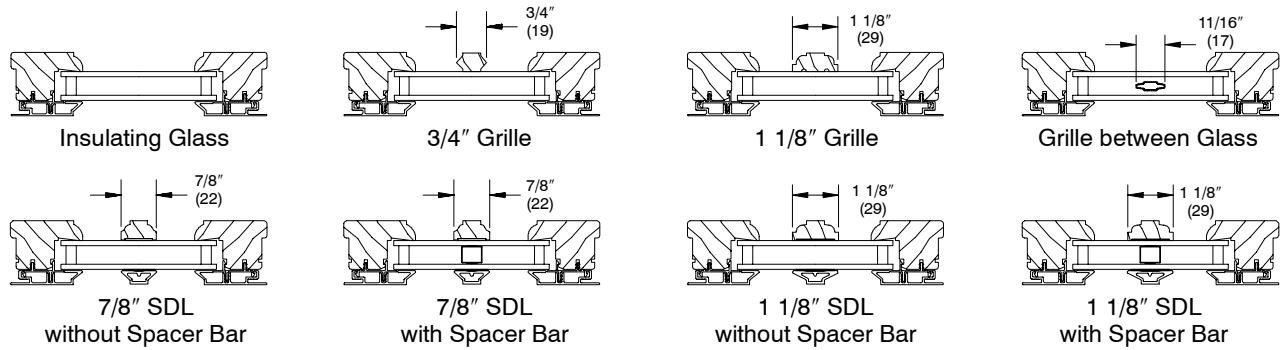
SECTION DETAILS: DIVIDED LITE OPTIONS

NO SCALE

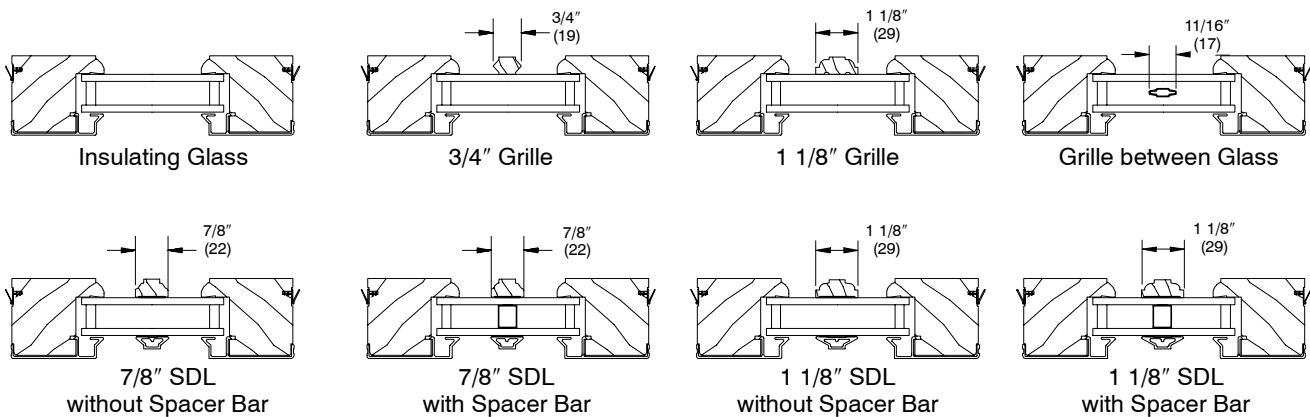
Operating



Transom



Picture 2" Sash



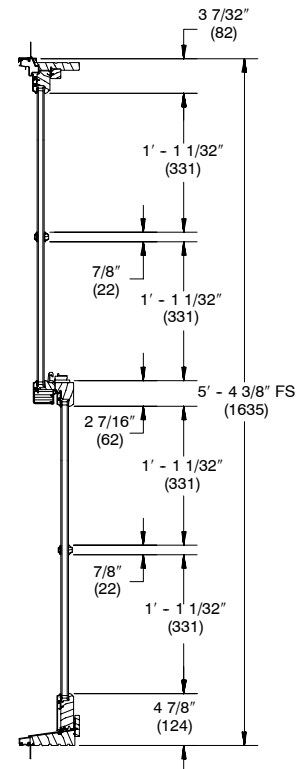
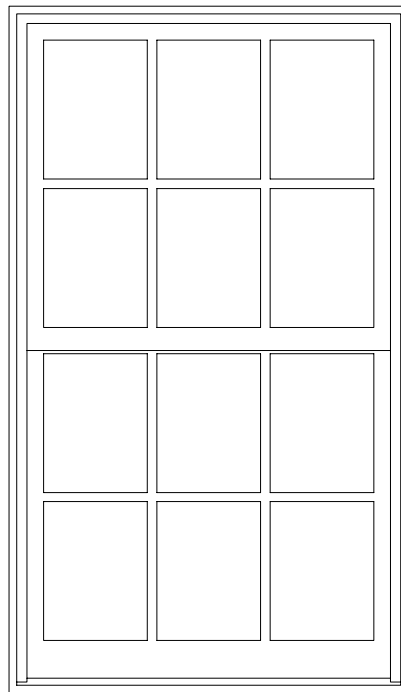
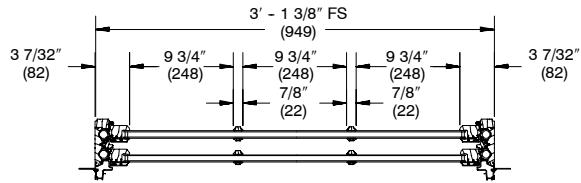
NOTE:

Grille = Removable interior divider
SDL = Simulated divided lite

CLAD ULTIMATE DOUBLE HUNG MAGNUM

RECTANGULAR DAYLIGHT OPENING CONVERSIONS

NOT TO SCALE



Conversion Formula:

$$\frac{\text{DLO} - \text{Total Bar Width}}{\text{Number of Lites}} = \text{Individual DLO}$$

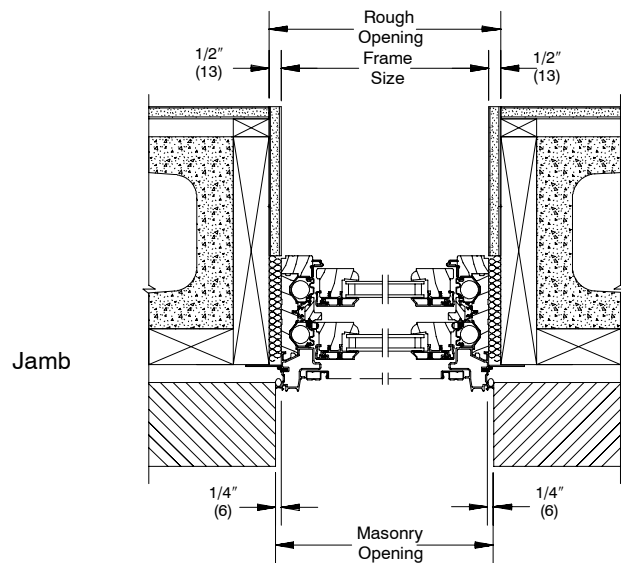
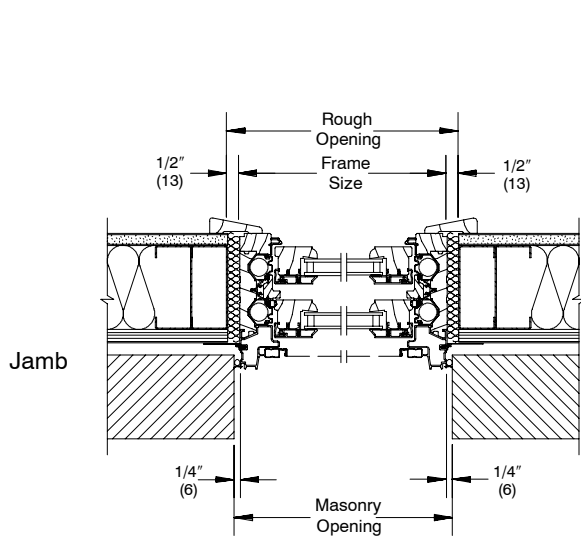
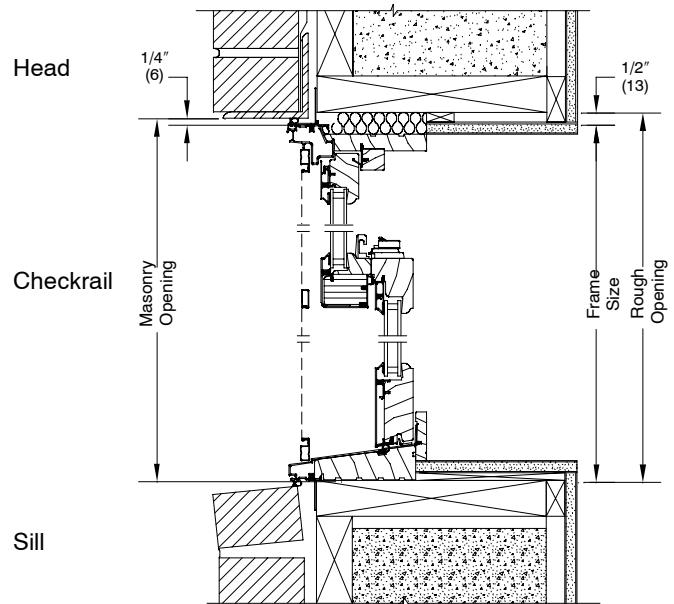
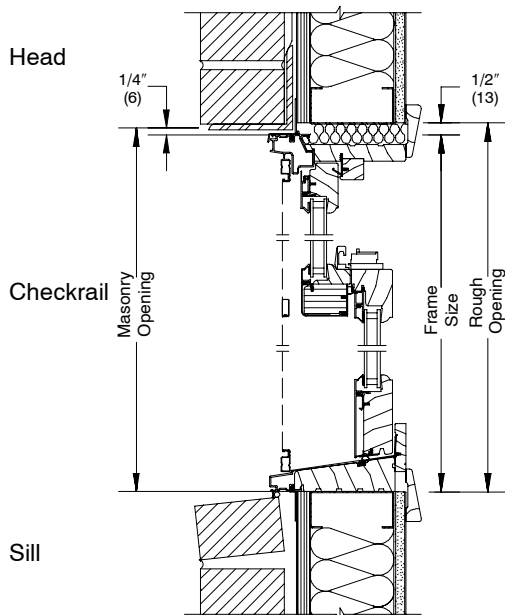
NOTE:

For additional information on individual daylight openings please contact your Marvin representative.

CLAD ULTIMATE DOUBLE HUNG MAGNUM

SECTION DETAILS: CONSTRUCTION

NOT TO SCALE



Brick Veneer with Steel Stud Construction

Brick Veneer with Concrete Block Construction

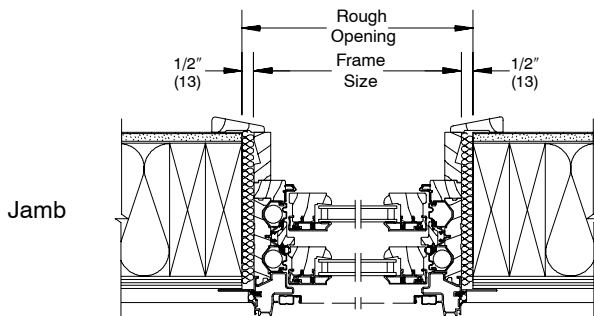
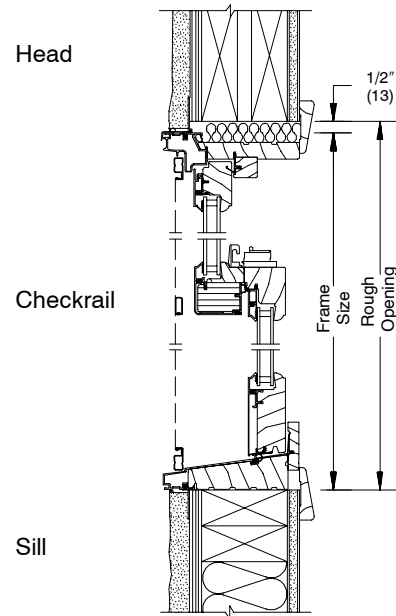
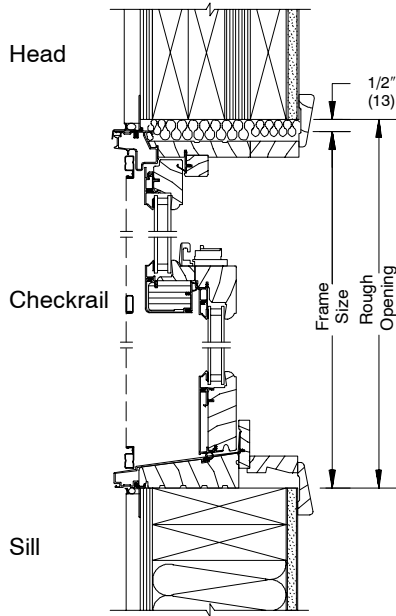
NOTE:

The above wall sections represent typical wall conditions, these details are not intended as installation instructions. Please refer to the installation instructions provided with the purchased units.

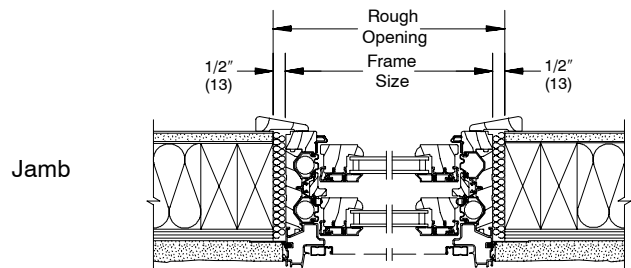
CLAD ULTIMATE DOUBLE HUNG MAGNUM

SECTION DETAILS: CONSTRUCTION

NOT TO SCALE



Wood Siding with 2x6
 Frame Construction



Stucco with 2x4
 Frame Construction

NOTE:

The above wall sections represent typical wall conditions, these details are not intended as installation instructions. Please refer to the installation instructions provided with the purchased units.